



**arch environmental group**

healthAIR - cleanWATER - safeEARTH

23937 Research Drive

Farmington Hills, MI 48335

Ph (248) 426-0165

Fax (248) 427-0305

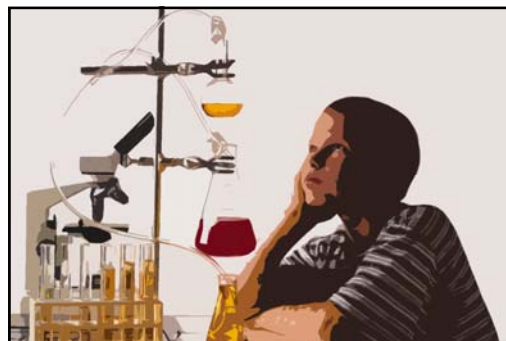
**www.archenvgroup.com**

Detroit, Lansing, Cadillac, Chicago

**We know schools...**

Allen Park Public Schools  
Armada Area Schools  
Birmingham Public Schools  
Carman-Ainsworth Community Schools  
Clintondale Community Schools  
Crestwood School District  
Davison Community Schools  
Dexter Community Schools  
Farmington Area Schools  
Fenton Area Public Schools  
Flint Public Schools  
Fraser Public Schools  
Garden City Public Schools  
Grand Rapids Public Schools  
Hamtramck Public Schools  
Highland Park Public Schools  
Holly Area Schools  
Huron Schools  
Huron Valley School District  
Jackson Public Schools  
Kearsley Community Schools  
Lake Orion Community Schools  
Lansing Public Schools  
Memphis Community Schools  
Mount Clemens Community Schools  
Northville Public Schools  
Northwest School District  
Novi Community Schools  
Pinckney Community Schools  
Plymouth-Canton Community Schools  
Pontiac School District  
Redford Union Schools  
Romulus Community Schools

Royal Oak Public Schools  
South Lyon Community Schools  
Southfield Public Schools  
Southgate Community Schools  
Tecumseh Public Schools  
Trenton Public Schools  
Troy School District  
Utica Community Schools  
Walled Lake Consolidated Schools  
Wayne-Westland Community Schools  
West Bloomfield School District  
Whitmore Lake Community Schools



Woodhaven-Brownstown School District  
Lawrence Technological University  
Schoolcraft College  
St. Clair County Community College  
Wayne State University

*In an era of environmental awareness, The arch environmental group provides the knowledge and tools necessary to create an environmentally safe school building*

**...just ask them.**