



INFRARED SERVICES

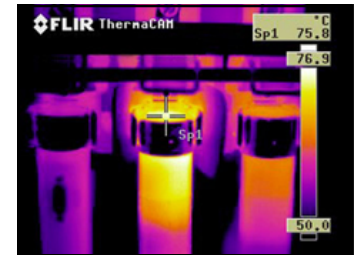
Bridging your environmental needs.



Infrared technology has been extremely beneficial to facilities management and engineering services in recent years. Infrared photography enables photographic images to see what the eye cannot. Many materials reflect and transmit infrared radiation in a different manner than visible radiation (light). FLIR's (Forward Looking Infrared cameras) takes photographs using the infrared portion of the electromagnetic spectrum. FLIRs use "Thermal energy" to create a photograph and create images based on temperature differences. There are numerous uses for the FLIR camera, and they are used in a wide variety of industries such as criminal justice, energy supply and national defense. Facilities management can benefit on many fronts and *arch environmental group* is trained and prepared to assist you. The following are just some of the uses that may be of interest in solving some of your building issues:

Electrical Systems

Insurance audits often require infrared electrical inspections while other conduct this activity for safety reasons only. *arch environmental group* can provide all levels of infrared electrical inspections including, substation electrical inspections including switchgear, breakers, transformers, capacitor banks and electrical motors. Don't wait for the fire to find you.

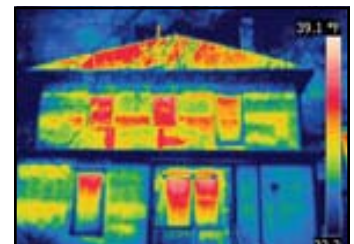
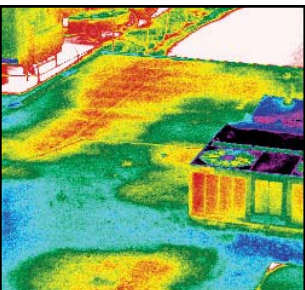


Mechanical Systems

Energy loss class cause significant performance problems and unnecessary energy costs. *arch environmental group* is prepared to conduct infrared inspections on your mechanical bearings, heat ventilation air conditioning equipment, cold storage cooling and insulation leaks in refrigeration equipment.

Building Envelopes and Structures

arch environmental group is prepared to conduct your thermal heat loss inspections, moisture contamination evaluations, concrete water heated floor inspections, locate missing or damaged insulation, identify air leakage energy losses, evaluate the thermal performance of retrofits and locate radiant heating wires or pipes. This list is important in both private homes and commercial/industrial settings. Energy loss in building envelopes has always been important, but with the current increasing cost of energy, this has become a significant factor in cost savings.



Roofing Systems

arch environmental group can also conduct flat roof leak detection surveys which includes the identification of water damaged sections. This inspection will eliminate replacement of good roofing and document problems before your warranty/bond expires.



23937 Research Drive
Farmington Hills, Michigan
Phone: (248) 426-0165
Fax: (248) 427-0356
Detroit, Chicago, Lansing, Cadillac
www.archenvgroup.com