



BIOLOGICAL & IAQ SERVICES

Bridging your environmental needs.

General Indoor Air Quality (IAQ) Investigations

Conduct a general study throughout your facility or within a "area of concern" within your facility that monitors comfort issues such as temperature, relative humidity and carbon dioxide.

Expanded IAQ Investigations

Conduct a general study throughout your facility or within a "area of concern" within your facility that monitors comfort issues and expanded issues such as carbon monoxide, hydrogen sulfide, combustible gasses, mold, etc.

Mold Investigations

Inspect and confirm the presence of mold within a facility. Conformation sampling is conducted utilizing various non-viable (tape-pull or bulk) or viable (swab or bulk) sampling techniques.

Mold Spore Air Sampling

Collect air samples in order to determine mold spore air concentrations utilized for either background level determinations or for post mold mitigation clearance identifications. Either non-viable spore-trap air samples or viable spore-impaction samples can be used for these purposes. Specialty "WallChek" air samples can be collected within wall cavities in order to determine if mold growth contamination exists within these areas.



Allergen Analysis

Quantitative analysis to identify different allergens through bulk, dust, swab, or wipe sampling techniques. Testing available for cat, dog, cockroach, dust mite, and mold allergens

FLIR - Forward Looking Infrared Consulting

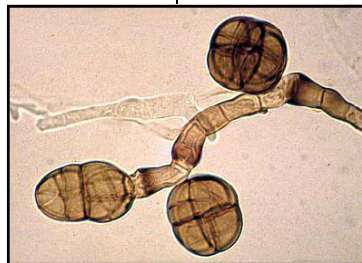
arch environmental group is pleased to introduce the newest technology in order to better serve our Indoor Air Quality and Biological Clients. In addition assisting in potential mold sources, the camera can be used for many other applications such as water intrusions, heat loss, asphalt integrity and many more. Please review our in-depth link to review specific uses and *arch environmental group* success stories.



23937 Research Drive
Farmington Hills, Michigan
Phone: (248) 426-0165
Fax: (248) 427-0356
Detroit, Chicago, Lansing, Cadillac
www.archenvgroup.com

Summary

arch environmental group's Indoor Air Quality Program steps past the normal investigative aspects of IAQ services and aims to assist our clients with preventative services to minimize the affects of poor indoor air quality and provide a safe, healthy indoor air environment. Our consultants can help identify specific problems through general IAQ investigations and air sampling (such as mold and fungus or bacteria sampling) and can set-up health & safety programs to promote safe, healthy indoor air



environments in unique situations, such as during construction in an occupied building. Supplementing our IAQ/H&S program is noise control, through noise monitoring and

abatement, and water testing programs. Both of these secondary IAQ/H&S programs assist with improving the overall conditions of the building.



Equipment

- Indoor Air Quality Meters Air Flow Meters
- Air Flow Balometers
- Non-viable Mold Spore Impaction Air Samplers
- Viable Mold Spore Impaction Samplers
- Interior Wall Mold Sample
- Airborne Particulate (dust) Monitors
- Moisture Meters
- Detection Tube Samplers
- Four-Gas/Confined Space Meters
- Large & Desk-top HEPA Air Filtration Devices
- Forward Looking Infrared Camera
- Volatile Organic Compound Meter (VOC)